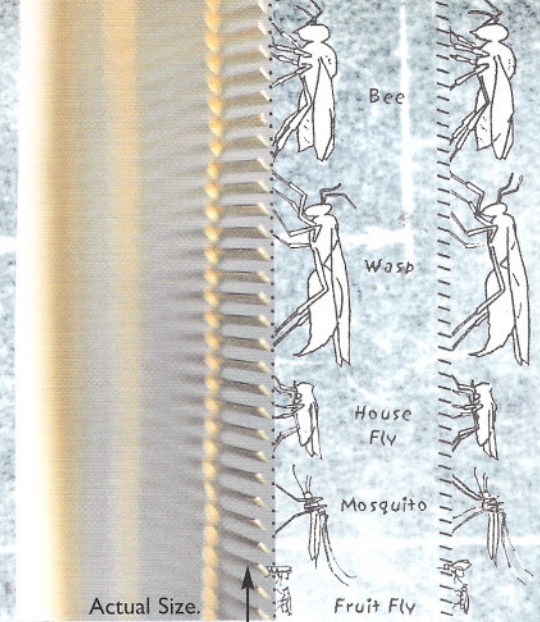




ANTI-GLARE

SOLAR SHADING SCREENS



BUG SCREENS

SMARTLOUVRE is, as the name suggests, a cleverly conceived multi-purpose micro-louvre, woven from strands of fine bronze alloy into a multi-application material. The uses of SmartLouvre are many and varied ranging from commercial applications through to industrial and domestic uses.

Solar Shading has long been recognised as an excellent solar shading product branded **KoolShade**, protecting buildings from the harsh rays of the sun. Uncomfortably hot working environments can result in a reduction of efficiency and productivity, costly mistakes and an increase in absenteeism. KoolShade screens fitted over glazing is a cost effective way of reducing solar heat gain and glare, providing a comfortable working environment.

Many secondary benefits can be gained as well, such as a protection against wind and rain, an effective insect mesh, less heat loss from the building in the winter months and less noise ingress from external sources.

The lighting industry use SmartLouvre as an effective light diffuser and as a device for directional artificial lighting. It is found in offices and places where display lighting is required, such as museums and exhibitions.



Other applications include security and privacy screening which can be stand alone screens, or integrated into cladding or glazing systems. SmartLouvre can withstand repeated assaults from hand thrown objects without penetration of the fabric, which makes it an ideal protector of glazing and people.

SmartLouvre can also be used as a ventilation louvre, or a filtration device for various industries, and a sand trap louvre.

SmartLouvre is sold through a worldwide network of distributors. Each distributor is capable of creating a SmartLouvre system to suit your requirements and will be able to advise you on all technical issues.

The louvre blades are tilted nominally at 20° and spaced at 700 louvre blades per linear metre. The blades are held in place by two bronze wires knotted above and below each blade and spaced vertically at 12.7mm. SmartLouvre is secured into aluminium frames by means of 0.76mm thick stainless steel lacer wire which holds the material under tension within the framework.

The material has undergone numerous test procedures to determine its performance in various conditions. Test data is available on request.

Actual Size.

